



**ALASKA DIVISION OF HOMELAND SECURITY &
EMERGENCY MANAGEMENT**



SITUATION REPORT 23-067 • MARCH 08, 2023

Toll-Free 1.800.478.2337

Anchorage Area 907.428.7000

SEOC 907.428.7100

<p><u>SEOC Preparedness Level</u> Level 1 – Routine Operations</p>	<p>http://ready.alaska.gov</p>	<p><u>National Terrorism Advisory System:</u> Read the NTAS Bulletin here</p>
<p><u>Maritime Security (MARSEC)</u> Level:1-Minimum Appropriate Security Measures</p>	<p>WHO Novel Coronavirus Pandemic (COVID-19): 2019 Novel Coronavirus</p>	<p><u>Alaska Military Installation Force Protection Level:</u> FPCON Bravo</p>

(Significant changes from previous situation reports are in red.)

Significant Issues:

Northwest Arctic Borough (NWAB) advised SEOC that the City of Kotzebue has declared a local disaster due to a winter storm(s) resulting in overwhelming snow. City is requesting \$150,000 in disaster funds to remove snow. NWAB is actively engaging with the city and reaching out to other communities in the Borough to see if there are additional impacts. The SEOC is evaluating the declaration to identify potential resource that may be able to assist.

State of Alaska Department of Health (DOH)

The DOH is leading the State of Alaska COVID-19 Recovery, supported by the SEOC and other state departments as required.

For current COVID-19 information, see:

<https://covid19.alaska.gov/>

<https://www.cdc.gov/coronavirus/2019-ncov/index.html>

NTAS Bulletin

The U.S. Department of Homeland Security has issued an updated National Terrorism Advisory Bulletin. The updated bulletin can be viewed at the below link

To read current or expired advisories, click the link below:

<https://www.dhs.gov/national-terrorism-advisory-system>

Travel Alerts and Conditions

For current driving conditions dial 511 or link to <https://511.alaska.gov/>

Barry Arm Landslide / Tsunami Risk

For the latest information on the Barry Arm Landslide and Tsunami risk, click here:

[DGGs Barry Arm Landslide and Tsunami Hazard](#)

Recent Earthquakes

USGS Earthquake Information: <http://earthquake.usgs.gov/>

National Tsunami Warning Center: <http://tsunami.gov/>

Alaska Volcanoes

Great Sitkin Alert Level: **Watch** and Aviation Color Code: **Orange**

Aniakchak Alert Level: **Advisory** and Aviation Color Code: **Yellow**

Semisopchnoi Alert Level: **Advisory** and Aviation Color Code: **Yellow**

Takawangah Alert Level: **Advisory** and Aviation Color Code: **Yellow**

Tanaga Alert Level: **Advisory** and Aviation Color Code: **Yellow**

Trident Alert Level: **Advisory** and Aviation Color Code: **Yellow**

For Alaska Volcano updates, go to: <https://www.avo.alaska.edu/>

Air Quality Index (AQI) Advisories

For the most up to date Air Quality Index Advisories:

<http://dec.alaska.gov/Applications/Air/airtoolsweb/Home/Index>

Spills of Oil and Hazardous Substances

The ADEC Spill Prevention and Response page is located at:

<http://dec.alaska.gov/spar/ppr/spill-information/response/>

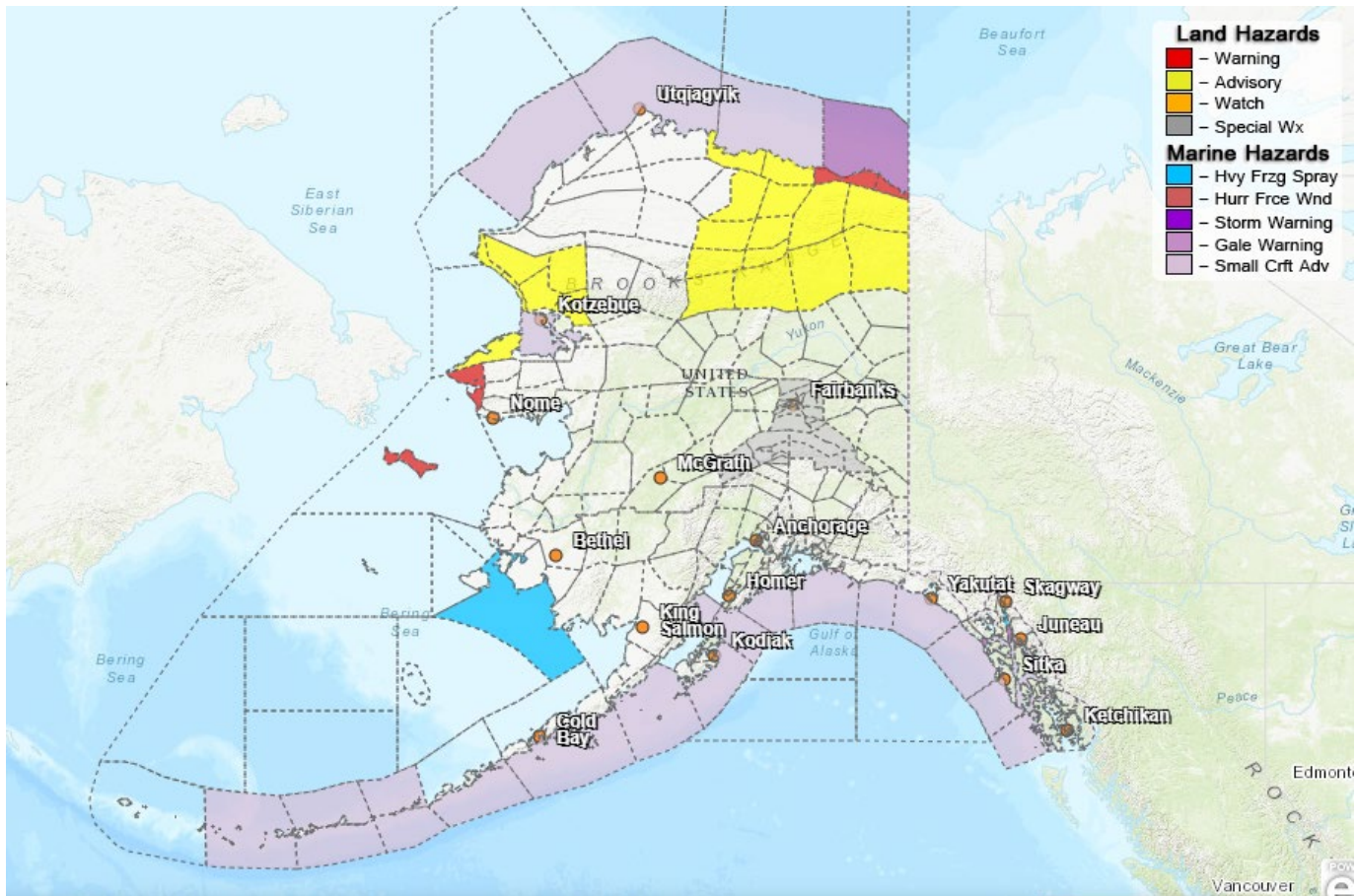
Alaska Cyber Security Information

State Employees may sign up for cyber security notifications and alerts at

<https://oit.alaska.gov/security>

CISA-Cybersecurity Services and Tools: www.cisa.gov/free-cybersecurity-services-and-tools

Significant Weather:



The following Winter Storm Warnings are in effect:

- St Lawrence Island and Bering Strait Coast - Heavy mixed precipitation expected. Additional snow accumulations of 8 to 12 inches and ice accumulations up to 0.05 inches expected. Winds gusting as high as 40 mph **extended through noon today.**

The following Blizzard Warnings are in effect:

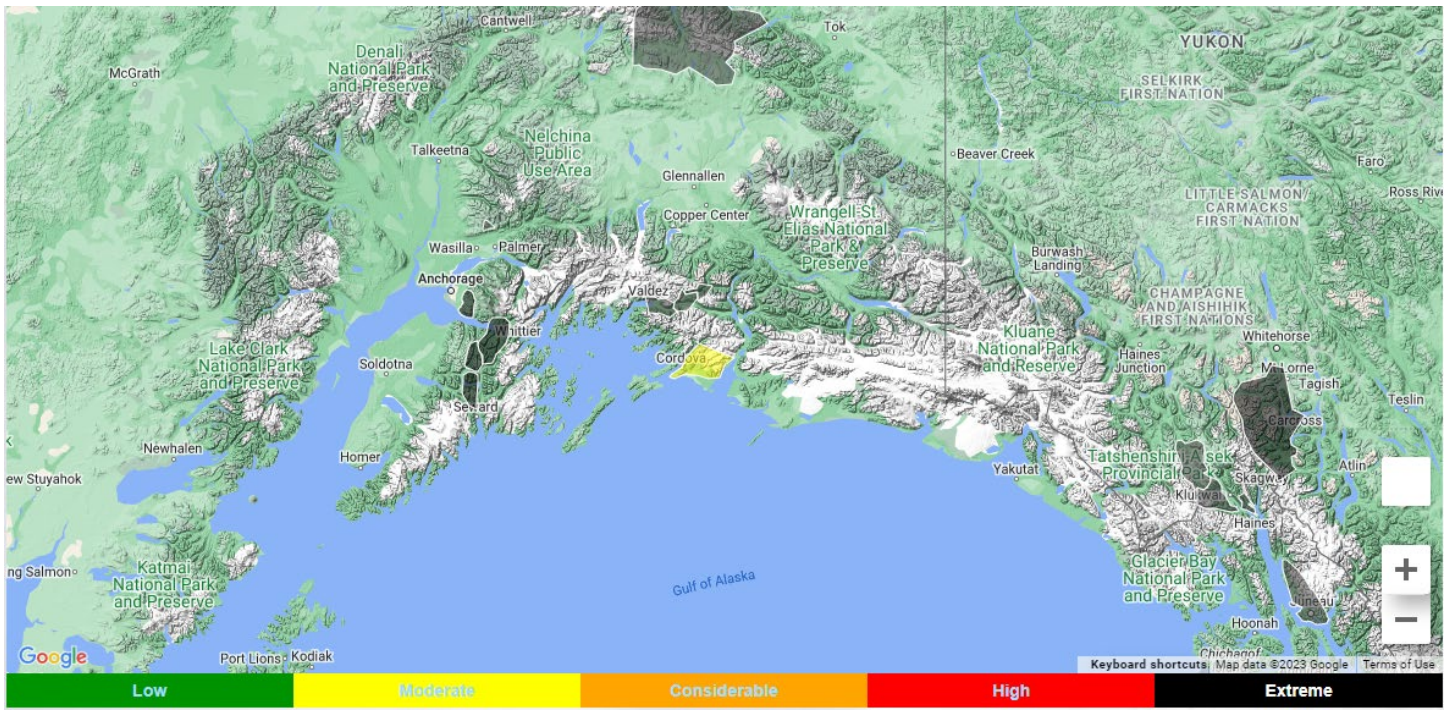
- **Eastern Beaufort Sea Coast - Blizzard conditions and high winds expected. Total snow accumulations of 2 to 4 inches. West winds gusting as high as 60 mph from 9:00PM Wednesday through 6:00AM Thursday.**

The following Winter Weather Advisories are in effect:

- **Lower Kobuk and Noatak Valleys - Snow and blowing snow with low visibility at times. Additional snow accumulations of 4 inches. Winds gusting as high as 40 mph through noon today.**
- **Chukchi Sea Coast - Snow and blowing snow with low visibility at times. Additional snow accumulations of 4 inches. Winds gusting as high as 40 mph through noon today.**
- **Northeastern Brooks Range - Snow and blowing snow with periods of low visibility expected. Total snow accumulations of 4 to 7 inches. Winds gusting as high as 45 mph from noon Wednesday through 6:00PM Thursday.**
- **Central Beaufort Sea Coast - Snow and blowing snow with low visibility expected. Total snow accumulations of up to 4 inches. Winds gusting as high as 40 mph from 3:00PM Wednesday through 6:00PM Thursday.**
- **Southeastern Brooks Range - Snow and blowing snow expected. Total snow accumulations of 3 inches. Visibility one half mile or less at times. Winds gusting as high as 50 mph from noon Wednesday through 6:00AM Thursday.**

For more information and the most current weather, go to: <http://www.weather.gov/arh>.

Avalanche Forecast:



- Haines – Considerable avalanche conditions above 1,500ft and moderate below 1,500 ft.
- Valdez – Moderate avalanche danger at all elevations.
- Cordova area: Moderate advisory level above 2,000ft and low advisory level below 2,000ft.
- Turnagain Pass – Moderate advisory level above 1,000ft, low advisory level below 1,000 ft.
- Hatcher Pass – Moderate advisory level at all elevations and on slopes 35° and steeper.

Check the Avalanche Forecast Center closest to your area for the most up to date information on avalanche potential. <https://alaskasnow.org> or <https://www.weather.gov/afc/avalancheweather>

The Next Situation Report: will be **09 March 2023**. A significant change in the situation or the threat level will prompt an interim report. This report is posted on the internet at <https://ready.alaska.gov/sitrep>.

To register for email distribution, go to <http://list.state.ak.us/mailman/listinfo/dhsem.situation.report>. Direct questions regarding this report to the SEOC at 907-428-7100 or seoc@alaska.gov